



LUXE ATELIER

MILANO

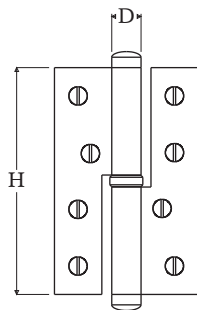
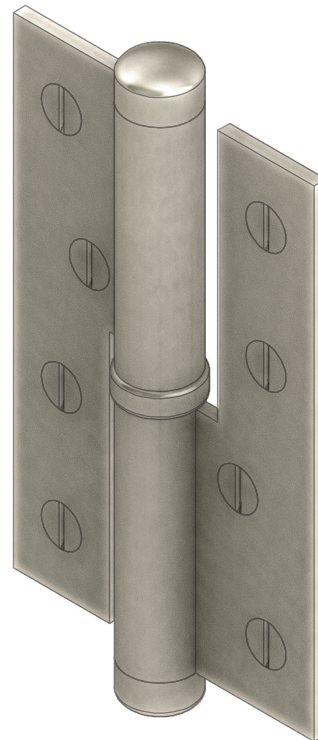


Cerniera a Libro Serie 604-01-F1 (RH/LH)
604-01-F1 Series Paumelle Hinge (RH/LH)

Dimensioni
Dimensions

	H	W	D
S	100	75	16
M	120	75	16
L	140	75	16

Dimensioni in millimetri
Dimensions given in millimeters



Ghiera con cuscinetti a sfera, perno in acciaio e viti legno in finitura coordinata.
Disponibile in tutte le finiture standard.

Dimensioni e finiture su misura disponibili su richiesta.

Stainless steel pin, ball bearings and wood screws in matching finish.

Additional sizes available by special order. Available in standard and custom finishes.